

Human Cadherin-8 / CDH8 (His Tag) recombinant protein



Catalog Number: 501300

General Information

Protein Construction

A DNA sequence encoding the extracellular domain of human CDH8 (NP_001787.2) (Met 1-Met 621) was expressed with a C-terminal polyhistidine tag.

Organism

Human

Expression Host

Human Cells

QC Testing

Purity

> 90 % as determined by SDS-PAGE

Endotoxin

< 1.0 EU per μg of the protein as determined by the LAL method

Stability

Samples are stable for up to twelve months from date of receipt at -70°C

Predicted N terminal

Ala 30

Molecular Mass

The secreted pro form of human CDH8 consists of 603 amino acids and has a predicted molecular mass of 66.6 kDa. As a result of glycosylation, it

migrates with an apparent molecular mass of 85-90 kDa in SDS-PAGE under reducing conditions.

Formulation

Lyophilized from sterile PBS, pH 7.4

1. 5 % trehalose and mannitol are added as protectants before lyophilization.

2. Please contact us for any concerns or special requirements.

Usage Guide

Storage

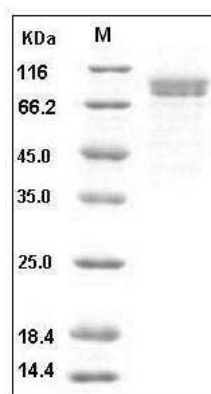
Store it under sterile conditions at -20°C to -80°C .

It is recommended that the protein be aliquoted for optimal storage. Avoid repeated freeze-thaw cycles.

Reconstitution

Adding sterile water, prepare a stock solution of 0.25 mg/ml. Concentration is measured by UV-Vis.

SDS-PAGE



Human Cadherin-8 / CDH8 Protein (His Tag) SDS-PAGE