

# Human TLE3 (aa 484-772, GST Tag) recombinant protein



Catalog Number: 501287

## General Information

### Gene Name Synonym

Enhancer of split groucho-like protein 3

### Protein Construction

A DNA sequence encoding the N-terminal fragment of human TLE3 (Q04726-1) (Ser 484-Tyr 772) was fused with the GST tag at the N-terminus.

### Organism

Human

### Expression Host

E. coli

## QC Testing

### Purity

> 78 % as determined by SDS-PAGE

### Endotoxin

Please contact us for more information.

### Stability

Samples are stable for up to twelve months from date of receipt at -70°C

### Predicted N terminal

Met

### Molecular Mass

The recombinant human TLE3/GST chimera

consists of 520 amino acids and has a predicted molecular mass of 58.5 kDa as estimated in SDS-PAGE under reducing conditions.

### Formulation

Lyophilized from sterile 20mM Tris, 0.15M NaCl, 5mM GSH, pH 7.5

1. 5 % trehalose and mannitol are added as protectants before lyophilization.

2. Please contact us for any concerns or special requirements.

## Usage Guide

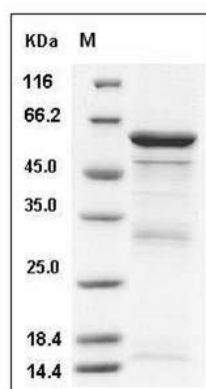
### Storage

Store it under sterile conditions at -20°C to -80°C. It is recommended that the protein be aliquoted for optimal storage. Avoid repeated freeze-thaw cycles.

### Reconstitution

Adding sterile water, prepare a stock solution of 0.25 mg/ml. Concentration is measured by UV-Vis.

### SDS-PAGE



Human TLE3 Protein (aa 484-772, GST Tag) SDS-PAGE