

Rat CLP1 / COLEC12 (His Tag) recombinant protein



Catalog Number: 501245

General Information

Gene Name Synonym

Collectin placenta protein 1; Nurse cell scavenger receptor 2

Protein Construction

A DNA sequence encoding the mature form of rat COLEC12 (Q4V885) (Ala101-Leu742) was expressed, with a polyhistidine tag at the N-terminus.

Organism

Rat

Expression Host

Baculovirus-Insect Cells

QC Testing

Purity

> 99 % as determined by SDS-PAGE

Endotoxin

< 1.0 EU per μ g of the protein as determined by the LAL method

Stability

Samples are stable for up to twelve months from date of receipt at -70°C

Predicted N terminal

His

Molecular Mass

The recombinant ratCOLEC12 consists of 658 amino acids and predicts a molecular mass of 72.4 KDa. It migrates as an approximately 90 KDa band in SDS-PAGE under reducing conditions.

Formulation

Lyophilized from sterile 20mM Tris, 500mM NaCl, pH 8.0

1. 5 % trehalose and mannitol are added as protectants before lyophilization.
2. Please contact us for any concerns or special requirements.

Usage Guide

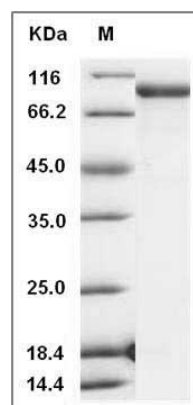
Storage

Store it under sterile conditions at -20°C to -80°C. It is recommended that the protein be aliquoted for optimal storage. Avoid repeated freeze-thaw cycles.

Reconstitution

Adding sterile water, prepare a stock solution of 0.25 mg/ml. Concentration is measured by UV-Vis.

SDS-PAGE



Rat CLP1 / COLEC12 Protein (His Tag) SDS-PAGE