

General Information

Gene Name Synonym

Protein NMTC1

Protein Construction

A DNA sequence encoding the human CTHRC1 (NP_612464.1) (Met 1-Lys 243) was fused with a polyhistidine tag at the C-terminus.

Organism

Human

Expression Host

Human Cells

QC Testing

Purity

> 95 % as determined by SDS-PAGE

Endotoxin

< 1.0 EU per µg of the protein as determined by the LAL method

Stability

Samples are stable for up to twelve months from date of receipt at -70°C

Predicted N terminal

Ser 31

Molecular Mass

The recombinant human CTHRC1 consists of 224

amino acids and has a predicted molecular mass of 24.5 kDa. In SDS-PAGE under reducing conditions, the apparent molecular mass of rh CTHRC1 is approximately 28-33 kDa due to glycosylation.

Formulation

Lyophilized from sterile PBS, pH 7.4

1. 5 % trehalose and mannitol are added as protectants before lyophilization.

2. Please contact us for any concerns or special requirements.

Usage Guide

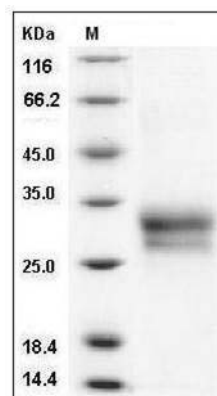
Storage

Store it under sterile conditions at -20°C to -80°C. It is recommended that the protein be aliquoted for optimal storage. Avoid repeated freeze-thaw cycles.

Reconstitution

Adding sterile water, prepare a stock solution of 0.25 mg/ml. Concentration is measured by UV-Vis.

SDS-PAGE



Human CTHRC1 Protein (His Tag) SDS-PAGE