

Mouse CHI3L1/YKL40 (His Tag) recombinant protein



Catalog Number: 501211

General Information

Gene Name Synonym

BRP39 protein; Breast regression protein 39;
Cartilage glycoprotein 39

Protein Construction

A DNA sequence encoding the extracellular domain of mouse CHI3L1 (Q61362) (Met 1-Ala 381) was expressed, with a C-terminal polyhistidine tag.

Organism

Mouse

Expression Host

Human Cells

QC Testing

Purity

> 97 % as determined by SDS-PAGE

Endotoxin

< 1.0 EU per μg of the protein as determined by the LAL method

Stability

Samples are stable for up to twelve months from date of receipt at -70°C

Predicted N terminal

Tyr 371

Molecular Mass

The secreted recombinant mouse CHI3L1

comprises 371 amino acids and has a calculated molecular mass of 42.3 kDa. As a result of glycosylation, the apparent molecular mass of rmCHI3L1 is approximately 50 kDa in SDS-PAGE under reducing conditions.

Formulation

Lyophilized from sterile PBS, pH 7.4

1. 5 % trehalose and mannitol are added as protectants before lyophilization.

2. Please contact us for any concerns or special requirements.

Usage Guide

Storage

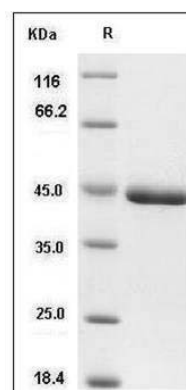
Store it under sterile conditions at -20°C to -80°C .

It is recommended that the protein be aliquoted for optimal storage. Avoid repeated freeze-thaw cycles.

Reconstitution

Adding sterile water, prepare a stock solution of 0.25 mg/ml. Concentration is measured by UV-Vis.

SDS-PAGE



Mouse CHI3L1 / YKL40 / gp39 Protein (His Tag)
SDS-PAGE