

Human S100A1 (Fc Tag) recombinant protein



Catalog Number: 501210

General Information

Gene Name Synonym

S-100 protein alpha chain; S-100 protein subunit alpha; S100 calcium-binding protein A1

Protein Construction

A DNA sequence encoding the human S100A1 (NP_006262.1) (Gly 2-Ser94) was expressed with the N-terminal fused Fc region of human IgG1.

Organism

Human

Expression Host

Human Cells

QC Testing

Activity

Measured by its ability to bind biotinylated Human Fc-S100B (cat: 504144) in functional Elisa.

Purity

> 95 % as determined by SDS-PAGE

Endotoxin

< 1.0 EU per μg of the protein as determined by the LAL method

Stability

Samples are stable for up to twelve months from date of receipt at -70°C

Predicted N terminal

Glu 20

Molecular Mass

The recombinant human Fc/S100A1 is a disulfide-linked homodimeric protein. The reduced monomer consists of 330 amino acids and has a predicted molecular mass of 37.1 kDa. As a result of glycosylation, the apparent molecular mass of rhFc/S100A1 monomer is approximately 40 kDa in SDS-PAGE under reducing conditions.

Formulation

Lyophilized from sterile 100mM Glycine, 10mM NaCl, 50mM Tris, pH 7.5

1. 5 % trehalose and mannitol are added as protectants before lyophilization.

2. Please contact us for any concerns or special requirements.

Usage Guide

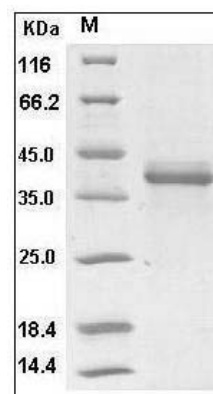
Storage

Store it under sterile conditions at -20°C to -80°C . It is recommended that the protein be aliquoted for optimal storage. Avoid repeated freeze-thaw cycles.

Reconstitution

Adding sterile water, prepare a stock solution of 0.25 mg/ml. Concentration is measured by UV-Vis.

SDS-PAGE



Human S100A1 Protein (Fc Tag) SDS-PAGE