

Mouse SerpinF2 (His Tag) recombinant protein



Catalog Number: 501196

General Information

Gene Name Synonym

Serine or cysteine peptidase inhibitor clade F member 2

Protein Construction

A DNA sequence encoding the mouse Serpin F2 (NP_032904.1) (Met 1-Lys 491) was expressed with a C-terminal polyhistidine tag.

Organism

Mouse

Expression Host

Human Cells

QC Testing

Activity

Measured by its ability to inhibit trypsin cleavage of a fluorogenic peptide substrate, Mca-RPKPVE-Nval-WRK(Dnp)-NH₂ (Anaspec, Catalog#27114). The IC₅₀ value is < 0.5 nM as measured in 100µL reaction mixture containing 1.25 ng trypsin (Sigma, Catalog#T1426), 10 µM substrate, 50 mM Tris, 10 mM CaCl₂, 0.15 M NaCl, pH 7.5.

Purity

> 97 % as determined by SDS-PAGE

Endotoxin

< 1.0 EU per µg of the protein as determined by the LAL method

Stability

Samples are stable for up to twelve months from date of receipt at -70°C

Predicted N terminal

Val 28

Molecular Mass

The secreted recombinant mouse Serpin F2 consists of 475 amino acids and has a calculated molecular mass of 53.6 kDa. As a result of glycosylation, the recombinant protein migrates as an approximately 60-65 kDa protein in SDS-PAGE under reducing conditions.

Formulation

Lyophilized from sterile PBS, pH 7.4

1. 5 % trehalose and mannitol are added as protectants before lyophilization.

2. Please contact us for any concerns or special requirements.

Usage Guide

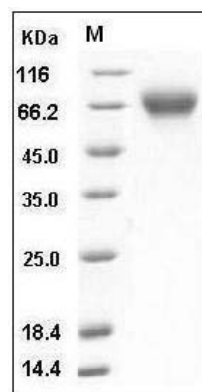
Storage

Store it under sterile conditions at -20°C to -80°C. It is recommended that the protein be aliquoted for optimal storage. Avoid repeated freeze-thaw cycles.

Reconstitution

Adding sterile water, prepare a stock solution of 0.25 mg/ml. Concentration is measured by UV-Vis.

SDS-PAGE



Mouse SerpinF2 Protein (His Tag) SDS-PAGE