

## General Information

### Gene Name Synonym

Acidic-type mitochondrial creatine kinase;  
Ubiquitous mitochondrial creatine kinase

### Protein Construction

A DNA sequence encoding human CKMT1A (P12532-1) (Ala40-His417) was expressed, with a polyhistidine tag at the N-terminus.

### Organism

Human

### Expression Host

Baculovirus-Insect Cells

## QC Testing

### Activity

Kinase activity untested

### Purity

> 95 % as determined by SDS-PAGE

### Endotoxin

< 1.0 EU per  $\mu\text{g}$  of the protein as determined by the LAL method

### Stability

Samples are stable for up to twelve months from date of receipt at  $-70^{\circ}\text{C}$

### Predicted N terminal

His

## Molecular Mass

The recombinant human CKMT1A consists of 396 amino acids and predicts a molecular mass of 45.3 KDa. It migrates as an approximately 43 KDa band in SDS-PAGE under reducing conditions.

## Formulation

Supplied as sterile 20mM Tris, 500mM NaCl, pH 8.5, 10% gly

1. 5 % trehalose and mannitol are added as protectants before lyophilization.

2. Please contact us for any concerns or special requirements.

## Usage Guide

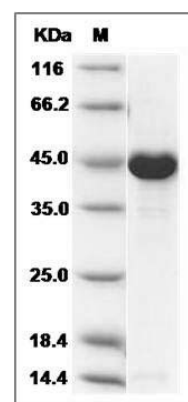
### Storage

Store it under sterile conditions at  $-20^{\circ}\text{C}$  to  $-80^{\circ}\text{C}$ . It is recommended that the protein be aliquoted for optimal storage. Avoid repeated freeze-thaw cycles.

### Reconstitution

Adding sterile water, prepare a stock solution of 0.25 mg/ml. Concentration is measured by UV-Vis.

## SDS-PAGE



Human CKMT1A Protein (His Tag) SDS-PAGE