

Human BCL6 (aa 1-150, His & Trx Tag) recombinant protein



Catalog Number: 501142

General Information

Gene Name Synonym

B-cell lymphoma 5 protein; Protein LAZ-3; Zinc finger and BTB domain-containing protein 27; Zinc finger protein 51

Protein Construction

A DNA sequence encoding the human BCL6 (P41182) N-terminal fragment (Met 1-Met 150) was fused with a Trx and a polyhistidine tag at the N-terminus.

Organism

Human

Expression Host

E. coli

QC Testing

Purity

> 92 % as determined by SDS-PAGE

Endotoxin

Please contact us for more information.

Stability

Samples are stable for up to twelve months from date of receipt at -70°C

Predicted N terminal

Met

Molecular Mass

The recombinant human BCL6/Trx fusion protein consisting of 309 amino acids and has a calculated molecular mass of 34.2 kDa. It migrates as an approximately 33 kDa band in SDS-PAGE under reducing conditions.

Formulation

Lyophilized from sterile 20mM Tris, 10% glycerol, pH 8.0

1. 5 % trehalose and mannitol are added as protectants before lyophilization.
2. Please contact us for any concerns or special requirements.

Usage Guide

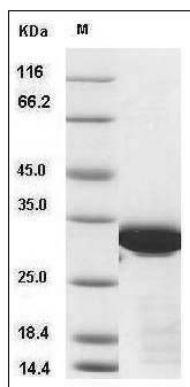
Storage

Store it under sterile conditions at -20°C to -80°C. It is recommended that the protein be aliquoted for optimal storage. Avoid repeated freeze-thaw cycles.

Reconstitution

Adding sterile water, prepare a stock solution of 0.25 mg/ml. Concentration is measured by UV-Vis.

SDS-PAGE



Human BCL6 / B-cell CLL lymphoma 6 Protein (aa 1-150, His & Trx Tag) SDS-PAGE