

Mouse DLL1 / Delta-like 1 (His Tag) recombinant protein



Catalog Number: 501135

General Information

Gene Name Synonym

Drosophila Delta homolog 1

Protein Construction

A DNA sequence encoding the extracellular domain of mouse DLL1 (NP_031891.2) (Met 1-Gln 516) was expressed, with a polyhistidine tag at the C-terminus.

Organism

Mouse

Expression Host

Human Cells

QC Testing

Activity

1. Measured by its ability to bind human NOTCH1 in a functional ELISA.
2. Measured by the ability of the immobilized protein to enhance BMP2 induced alkaline phosphatase activity in C3H10T1/2 mouse embryonic fibroblast cells. The ED₅₀ for this effect is typically 2-20 µg/mL.

Purity

> 95 % as determined by SDS-PAGE

Endotoxin

< 1.0 EU per µg of the protein as determined by the LAL method

Stability

Samples are stable for up to twelve months from date of receipt at -70°C

Predicted N terminal

Ser 22

Molecular Mass

The recombinant mouse DLL1 consists of 506 amino acids and has a predicted molecular mass of 55 kDa. In SDS-PAGE under reducing conditions, the apparent molecular mass of rm DLL1 is approximately 65 kDa due to glycosylation.

Formulation

1. Lyophilized from sterile PBS, pH 7.4, 20% glycerol
2. 1.5 % trehalose and mannitol are added as protectants before lyophilization.
3. Please contact us for any concerns or special requirements.

Usage Guide

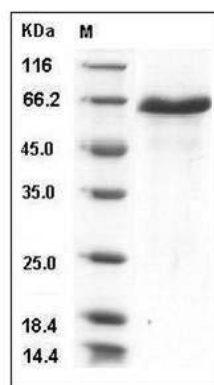
Storage

Store it under sterile conditions at -20°C to -80°C. It is recommended that the protein be aliquoted for optimal storage. Avoid repeated freeze-thaw cycles.

Reconstitution

Adding sterile water, prepare a stock solution of 0.25 mg/ml. Concentration is measured by UV-Vis.

SDS-PAGE



Mouse DLL1 / Delta-1 Protein (His Tag) SDS-PAGE