

# Human FTLS / RSPO2 (186 Leu/Pro, Fc Tag) recombinant protein



Catalog Number: 501112

## General Information

### Gene Name Synonym

Roof plate-specific spondin-2

### Protein Construction

A DNA sequence encoding the human RSPO2 (Q6UXX9-1) N-terminal fragment (Met 1-Gly 205, 186 Leu/Pro) was fused with the Fc region of human IgG1 at the C-terminus.

### Organism

Human

### Expression Host

Human Cells

## QC Testing

### Activity

Measured by its ability to induce activation of  $\beta$ catenin response in a Topflash Luciferase assay using HEK293T human embryonic kidney cells. The ED<sub>50</sub> for this effect is typically 10-60 ng/mL in the presence of 5 ng/mL recombinant mouse Wnt3a.

### Purity

> 90 % as determined by SDS-PAGE

### Endotoxin

< 1.0 EU per  $\mu$ g of the protein as determined by the LAL method

### Stability

Samples are stable for up to twelve months from date of receipt at -70°C

### Predicted N terminal

Gln 22

## Molecular Mass

The secreted recombinant human RSPO2/Fc is a disulfide-linked homodimer. The reduced monomer comprises 425 amino acids and has a predicted molecular mass of 48.3 kDa. The apparent molecular mass of rh RSPO2/Fc monomer is approximately 50 kDa in SDS-PAGE under reducing conditions.

## Formulation

Lyophilized from sterile PBS, pH 7.4

1. 5 % trehalose and mannitol are added as protectants before lyophilization.
2. Please contact us for any concerns or special requirements.

## Usage Guide

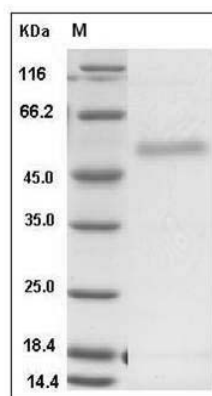
### Storage

Store it under sterile conditions at -20°C to -80°C. It is recommended that the protein be aliquoted for optimal storage. Avoid repeated freeze-thaw cycles.

### Reconstitution

Adding sterile water, prepare a stock solution of 0.25 mg/ml. Concentration is measured by UV-Vis.

### SDS-PAGE



Human FTLS / RSPO2 Protein (186 Leu/Pro, Fc Tag) SDS-PAGE