

# Human E-Cadherin/CDH1/E-cad/CD324 (Fc Tag) recombinant protein



Catalog Number: 501092

## General Information

### Gene Name Synonym

CAM 120/80; Epithelial cadherin; Uvomorulin; E-Cad/CTF1; E-Cad/CTF2; E-Cad/CTF3

### Protein Construction

A DNA sequence encoding the human E-Cad (P12830)(Met1-Ile707) was expressed with the Fc region of human IgG1 at the C-terminus.

### Organism

Human

### Expression Host

Human Cells

## QC Testing

### Activity

Measured by the ability of the immobilized protein to support the adhesion of MCF-7 human breast adenocarcinoma cells.

When cells are added to E-Cad coated plates (5 µg/mL, 100 µL/well), approximately 33% will adhere specifically after 90 minutes at 37 °C.

### Purity

> 90 % as determined by SDS-PAGE

### Endotoxin

< 1.0 EU per µg of the protein as determined by the LAL method

### Stability

Samples are stable for up to twelve months from date of receipt at -70°C

### Predicted N terminal

Gln 23 & Asp 155

## Molecular Mass

The recombinant human E-Cad/Fc is a disulfide-linked homodimer. The reduced monomer comprises 791 amino acids and has a predicted molecular mass of 87.1 kDa. The apparent molecular mass of the protein is approximately 116-126 kDa in SDS-PAGE under reducing conditions.

## Formulation

Lyophilized from sterile PBS, pH 7.4.

1. 5 % trehalose and mannitol are added as protectants before lyophilization.
2. Please contact us for any concerns or special requirements.

## Usage Guide

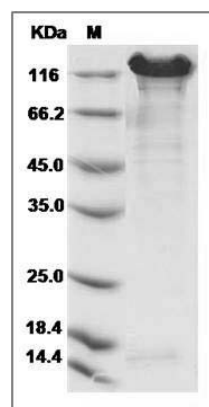
### Storage

Store it under sterile conditions at -20°C to -80°C. It is recommended that the protein be aliquoted for optimal storage. Avoid repeated freeze-thaw cycles.

### Reconstitution

Adding sterile water, prepare a stock solution of 0.25 mg/ml. Concentration is measured by UV-Vis.

## SDS-PAGE



Human E-Cadherin / CDH1 / E-cad / CD324  
Protein (Fc Tag) SDS-PAGE