

# Human DLL1 / Delta-like 1 (His Tag) recombinant protein



Catalog Number: 501091

## General Information

### Gene Name Synonym

Drosophila Delta homolog 1

### Protein Construction

A DNA sequence encoding the human DLL1 (NP\_005609.3) extracellular domain (Met 1-Gly 540) was fused with a polyhistidine tag at the C-terminus.

### Organism

Human

### Expression Host

Human Cells

## QC Testing

### Activity

1. Measured by its ability to bind human NOTCH1 in a functional ELISA.
2. Measured by the ability of the immobilized protein to enhance BMP2 induced alkaline phosphatase activity in C3H10T1/2 mouse embryonic fibroblast cells. The ED<sub>50</sub> for this effect is typically 2-20 µg/mL.

### Purity

> 98 % as determined by SDS-PAGE

### Endotoxin

< 1.0 EU per µg of the protein as determined by the LAL method

### Stability

Samples are stable for up to twelve months from date of receipt at -70°C

### Predicted N terminal

Ser 22

### Molecular Mass

The recombinant human DLL1 consists of 530 amino acids and predicts a molecular mass of 57.4 kDa. In SDS-PAGE under reducing conditions, rh DLL1 migrates as an approximately 58 kDa band due to glycosylation.

### Formulation

Lyophilized from sterile PBS, pH 7.4

1. 5 % trehalose and mannitol are added as protectants before lyophilization.
2. Please contact us for any concerns or special requirements.

## Usage Guide

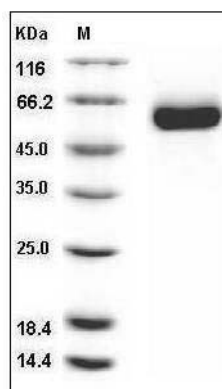
### Storage

Store it under sterile conditions at -20°C to -80°C. It is recommended that the protein be aliquoted for optimal storage. Avoid repeated freeze-thaw cycles.

### Reconstitution

Adding sterile water, prepare a stock solution of 0.25 mg/ml. Concentration is measured by UV-Vis.

### SDS-PAGE



Human DLL1 / Delta-1 Protein (His Tag) SDS-PAGE