

# Mouse CRELD2 (Fc Tag) recombinant protein



Catalog Number: 501012

## General Information

### Protein Construction

A DNA sequence encoding the mouse Creld2 (NP\_083996.1) (Met1-Leu350) was expressed with the Fc region of human IgG1 at the C-terminus.

### Organism

Mouse

### Expression Host

Human Cells

## QC Testing

### Activity

Measured by its ability to induce adhesion of ATDC5 mouse chondrogenic cells. When cells are added to mCRELD2-Fc/His coated plates (0.625 µg/mL, 100 µL/well), approximately >30% will adhere specifically after 60 minutes at 37°C.

### Purity

> 90 % as determined by SDS-PAGE.

### Endotoxin

<1.0 EU per µg protein as determined by the LAL method.

### Stability

Samples are stable for up to twelve months from date of receipt at -70°C

### Predicted N terminal

Ser 23

## Molecular Mass

The recombinant mouse Creld2 consists 566 amino acids and predicts a molecular mass of 62.8 kDa.

## Formulation

Lyophilized from sterile PBS, pH 7.4.

1. 5 % trehalose and mannitol are added as protectants before lyophilization.

2. Please contact us for any concerns or special requirements.

## Usage Guide

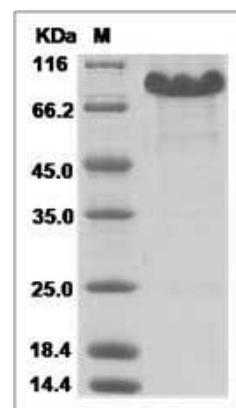
### Storage

Store it under sterile conditions at -20°C to -80°C. It is recommended that the protein be aliquoted for optimal storage. Avoid repeated freeze-thaw cycles.

### Reconstitution

Adding sterile water, prepare a stock solution of 0.25 mg/ml. Concentration is measured by UV-Vis.

### SDS-PAGE



Mouse CRELD2 Protein (Fc Tag) SDS-PAGE