

Human KLC2 / KLC-2 (GST Tag) recombinant protein



Catalog Number: 501001

General Information

Protein Construction

A DNA sequence encoding the human KLC2 (NP_073733.1) (Met1-Gly622) was expressed with a C-terminal polyhistidine-tagged GST tag at the N-terminus (his-GST).

Organism

Human

Expression Host

Baculovirus-Insect Cells

QC Testing

Purity

> 90 % as determined by SDS-PAGE.

Endotoxin

<1.0 EU per μg protein as determined by the LAL method.

Stability

Samples are stable for up to twelve months from date of receipt at -70°C

Predicted N terminal

Met

Molecular Mass

The recombinant human KLC2 consists 859 amino

acids and predicts a molecular mass of 96.8 kDa.

Formulation

Lyophilized from sterile 20 mM Tris, 500 mM NaCl, 10 % glycerol, pH 7.4.

1. 5 % trehalose and mannitol are added as protectants before lyophilization.
2. Please contact us for any concerns or special requirements.

Usage Guide

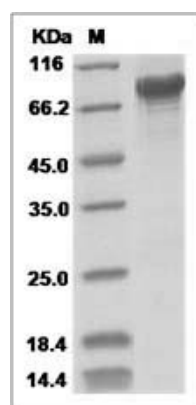
Storage

Store it under sterile conditions at -20°C to -80°C . It is recommended that the protein be aliquoted for optimal storage. Avoid repeated freeze-thaw cycles.

Reconstitution

Adding sterile water, prepare a stock solution of 0.25 mg/ml. Concentration is measured by UV-Vis.

SDS-PAGE



KLC2 protein SDS-PAGE