

Rat REG1A (Fc Tag) recombinant protein



Catalog Number: 500973

General Information

Gene Name Synonym

Islet cells regeneration factor; Islet of Langerhans regenerating protein; Pancreatic stone protein; Pancreatic thread protein

Protein Construction

A DNA sequence encoding the rat REG1A (P10758) (Met1-Asn100) was expressed, fused with the Fc region of human IgG1 at the C-terminus.

Organism

Rat

Expression Host

Human Cells

QC Testing

Purity

(55.3+31.4) % as determined by SDS-PAGE

Endotoxin

< 1.0 EU per μg of the protein as determined by the LAL method

Stability

Samples are stable for up to twelve months from date of receipt at -70°C

Predicted N terminal

Leu 23

Molecular Mass

The recombinant rat REG1A /Fc is a disulfide-linked homodimer. The reduced monomer comprises 319 amino acids and has a predicted molecular mass of 35.8 kDa. The apparent molecular mass of the protein is approximately 40 and 43 kDa in SDS-PAGE under reducing conditions.

Formulation

Lyophilized from sterile PBS, pH 7.4

1. 5 % trehalose and mannitol are added as protectants before lyophilization.

2. Please contact us for any concerns or special requirements.

Usage Guide

Storage

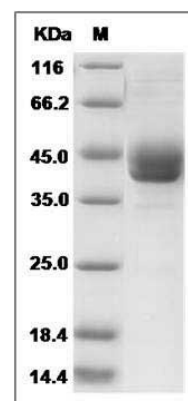
Store it under sterile conditions at -20°C to -80°C .

It is recommended that the protein be aliquoted for optimal storage. Avoid repeated freeze-thaw cycles.

Reconstitution

Adding sterile water, prepare a stock solution of 0.25 mg/ml. Concentration is measured by UV-Vis.

SDS-PAGE



Rat REG1A / PSPS Protein (Fc Tag) SDS-PAGE