

# Rat KIRREL3/NEPH2 (His Tag) recombinant protein



Catalog Number: 500962

## General Information

### Protein Construction

A DNA sequence encoding the rat KIRREL3 (Q09GS6) (Met1-Ala523) was expressed with a polyhistidine tag at the C-terminus.

### Organism

Rat

### Expression Host

Human Cells

## QC Testing

### Activity

Measured by the ability of the immobilized protein to support the adhesion of MS1 mouse pancreatic islet endothelial cells.

When cells are added to rat KIRREL3 coated plates (15 µg/mL, 100 µL/well), > 20% will adhere specifically after 90 minutes at 37 °C.

### Purity

> 95 % as determined by SDS-PAGE

### Endotoxin

< 1.0 EU per µg of the protein as determined by the LAL method

### Stability

Samples are stable for up to twelve months from date of receipt at -70°C

### Predicted N terminal

Leu 22

### Molecular Mass

The recombinant rat KIRREL3 comprises 513 amino acids and predicts a molecular mass of 56.4 kDa. The apparent molecular mass of the recombinant protein is approximately 60-64 kDa in SDS-PAGE under reducing conditions due to glycosylation.

### Formulation

Lyophilized from sterile PBS, pH 7.4

1. 5 % trehalose and mannitol are added as protectants before lyophilization.

2. Please contact us for any concerns or special requirements.

## Usage Guide

### Storage

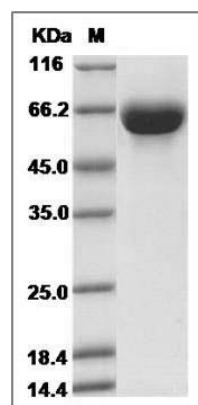
Store it under sterile conditions at -20°C to -80°C.

It is recommended that the protein be aliquoted for optimal storage. Avoid repeated freeze-thaw cycles.

### Reconstitution

Adding sterile water, prepare a stock solution of 0.25 mg/ml. Concentration is measured by UV-Vis.

### SDS-PAGE



Rat KIRREL3 / NEPH2 Protein (His Tag) SDS-PAGE