

# Human BPHL (His Tag) recombinant protein



Catalog Number: 500932

## General Information

### Gene Name Synonym

Biphenyl hydrolase-like protein; Biphenyl hydrolase-related protein; Breast epithelial mucin-associated antigen

### Protein Construction

A DNA sequence encoding the mature form of human BPHL (Q86WA6-1) (Ser38-Gln291) was expressed with a polyhistidine tag at the N-terminus.

### Organism

Human

### Expression Host

E. coli

## QC Testing

### Purity

> 95 % as determined by SDS-PAGE

### Endotoxin

Please contact us for more information.

### Stability

Samples are stable for up to twelve months from date of receipt at -70°C

### Predicted N terminal

His

### Molecular Mass

The recombinant human BPHL consists of 268 amino acids and predicts a molecular mass of 30.7 KDa. It migrates as an approximately 31 KDa band in SDS-PAGE under reducing conditions.

### Formulation

Lyophilized from sterile 20mM Tris, 50mM NaCl, 10% glycerol, pH 8.0

1. 5 % trehalose and mannitol are added as protectants before lyophilization.

2. Please contact us for any concerns or special requirements.

## Usage Guide

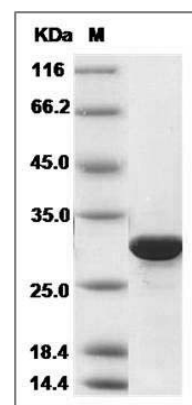
### Storage

Store it under sterile conditions at -20°C to -80°C. It is recommended that the protein be aliquoted for optimal storage. Avoid repeated freeze-thaw cycles.

### Reconstitution

Adding sterile water, prepare a stock solution of 0.25 mg/ml. Concentration is measured by UV-Vis.

### SDS-PAGE



Human BPHL Protein (His Tag) SDS-PAGE