

General Information

Gene Name Synonym

100 kDa ileum brush border membrane protein;
Ileal dipeptidylpeptidase

Protein Construction

A DNA sequence encoding the extracellular domain of human NAALADL1 (NP_005459.2) (Pro 29-Leu 740) was expressed, with a polyhistidine tag at the N-terminus.

Organism

Human

Expression Host

Human Cells

QC Testing

Purity

> 97 % as determined by SDS-PAGE

Endotoxin

< 1.0 EU per μg of the protein as determined by the LAL method

Stability

Samples are stable for up to twelve months from date of receipt at -70°C

Predicted N terminal

His

Molecular Mass

The recombinant human NAALADL1 comprises 728 amino acids and has a predicted molecular mass of 80 kDa. As a result of glycosylation, rh NAALADL1 migrates as an approximately 90 kDa band in SDS-PAGE under reducing conditions.

Formulation

Lyophilized from sterile PBS, pH 7.4

1. 5 % trehalose and mannitol are added as protectants before lyophilization.

2. Please contact us for any concerns or special requirements.

Usage Guide

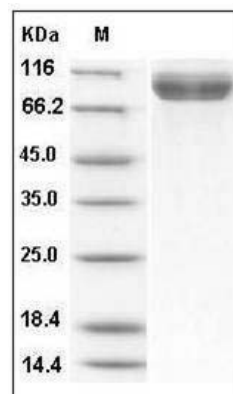
Storage

Store it under sterile conditions at -20°C to -80°C . It is recommended that the protein be aliquoted for optimal storage. Avoid repeated freeze-thaw cycles.

Reconstitution

Adding sterile water, prepare a stock solution of 0.25 mg/ml. Concentration is measured by UV-Vis.

SDS-PAGE



Human NAALADL1 Protein (His Tag) SDS-PAGE