

Human Cathepsin C/CTSC (His Tag) recombinant protein



Catalog Number: 500923

General Information

Gene Name Synonym

Cathepsin C; Cathepsin J; Dipeptidyl peptidase I; Dipeptidyl transferase; Dipeptidyl peptidase 1 exclusion domain chain; Dipeptidyl peptidase I exclusion domain chain; Dipeptidyl peptidase 1 heavy chain; Dipeptidyl peptidase I heavy chain; Dipeptidyl peptidase 1 light chain; Dipeptidyl peptidase I light chain

Protein Construction

A DNA sequence encoding the pro form of human cathepsin C (NP_001805.3) (Met 1-Leu 463) was expressed with a polyhistidine tag at the C-terminus.

Organism

Human

Expression Host

Human Cells

QC Testing

Activity

Measured by its ability to cleave the fluorogenic peptide substrate, Gly-Arg-7-amido-4-methylcoumarin (GRAMC). The specific activity is >200 pmoles/min/ μ g.

Purity

> 92 % as determined by SDS-PAGE

Endotoxin

< 1.0 EU per μ g of the protein as determined by the LAL method

Stability

Samples are stable for up to twelve months from date of receipt at -70°C

Predicted N terminal

Asp 25

Molecular Mass

The secreted recombinant human cathepsin C exists as the pro form after removal of the signal peptide. It consists of 450 amino acids and has a predicted molecular mass of 51 kDa. In SDS-PAGE under reducing conditions, the apparent molecular mass of rhCTSC is approximately 55 kDa.

Formulation

Lyophilized from sterile PBS, pH 7.4

1. 5 % trehalose and mannitol are added as protectants before lyophilization.

2. Please contact us for any concerns or special requirements.

Usage Guide

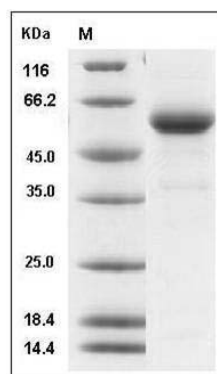
Storage

Store it under sterile conditions at -20°C to -80°C. It is recommended that the protein be aliquoted for optimal storage. Avoid repeated freeze-thaw cycles.

Reconstitution

Adding sterile water, prepare a stock solution of 0.25 mg/ml. Concentration is measured by UV-Vis.

SDS-PAGE



Human Cathepsin C/CTSC (His Tag) recombinant protein



Catalog Number: 500923

Human Cathepsin C / CTSC / DPPI Protein (His Tag) SDS-PAGE