

Mouse EphA1/Eph Receptor A1 (His Tag) recombinant protein



Catalog Number: 500918

General Information

Gene Name Synonym

Embryonic stem cell kinase; Tyrosine-protein kinase receptor ESK

Protein Construction

A DNA sequence encoding the extracellular domain of mouse EPHA1 (Q60750) (Met 1-Glu 548) was expressed, with a C-terminal polyhistidine tag.

Organism

Mouse

Expression Host

Human Cells

QC Testing

Activity

Measured by its binding ability in a functional ELISA.

Immobilized mouse EPHA1-His at 10 µg/ml (100 µl/well) can bind mouse EFNA1-Fc (Cat:503668). The EC₅₀ of mouse EFNA1-Fc (Cat:503668) is 21.3-49.8 ng/ml.

Purity

> 97 % as determined by SDS-PAGE

Endotoxin

< 1.0 EU per µg of the protein as determined by the LAL method

Stability

Samples are stable for up to twelve months from date of receipt at -70°C

Predicted N terminal

Arg 25

Molecular Mass

The secreted recombinant mouse EPHA1 comprises 535 amino acids and has a calculated molecular mass of 58.6 kDa. As a result of glycosylation, the apparent molecular mass of rmEPHA1 is approximately 68 kDa in SDS-PAGE under reducing conditions.

Formulation

Lyophilized from sterile PBS, pH 7.4

1. 5 % trehalose and mannitol are added as protectants before lyophilization.

2. Please contact us for any concerns or special requirements.

Usage Guide

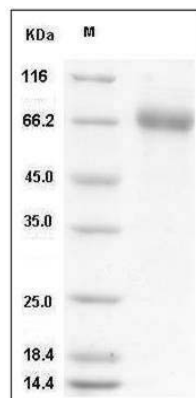
Storage

Store it under sterile conditions at -20°C to -80°C. It is recommended that the protein be aliquoted for optimal storage. Avoid repeated freeze-thaw cycles.

Reconstitution

Adding sterile water, prepare a stock solution of 0.25 mg/ml. Concentration is measured by UV-Vis.

SDS-PAGE



Mouse EphA1 / EPH receptor A1 Protein (His Tag)
SDS-PAGE