

Human SDF-2/SDF2 (His Tag) recombinant protein



Catalog Number: 500917

General Information

Gene Name Synonym

Stromal cell-derived factor 2; Stromal cell-derived factor 2, isoform CRA_c

Protein Construction

A DNA sequence encoding the pro form of human SDF2 (NP_008854.2) (Met 1-Leu 211) was expressed with a C-terminal polyhistidine tag.

Organism

Human

Expression Host

Baculovirus-Insect Cells

QC Testing

Purity

> 95 % as determined by SDS-PAGE

Endotoxin

< 1.0 EU per μg of the protein as determined by the LAL method

Stability

Samples are stable for up to twelve months from date of receipt at -70°C

Predicted N terminal

Ser 19

Molecular Mass

The recombinant human SDF2 consists of 204

amino acids after removal of the signal peptide and has a predicted molecular mass of 22.7 kDa, also estimated by SDS-PAGE under reducing conditions due to glycosylation.

Formulation

Lyophilized from sterile 50mM Tris, 100mM NaCl, pH 8.0, 0.5mM PMSF, 0.5mM EDTA, 0.5mM TCEP, 10% glycerol

1. 5 % trehalose and mannitol are added as protectants before lyophilization.

2. Please contact us for any concerns or special requirements.

Usage Guide

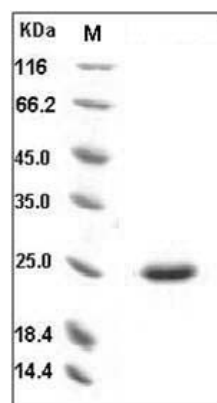
Storage

Store it under sterile conditions at -20°C to -80°C . It is recommended that the protein be aliquoted for optimal storage. Avoid repeated freeze-thaw cycles.

Reconstitution

Adding sterile water, prepare a stock solution of 0.25 mg/ml. Concentration is measured by UV-Vis.

SDS-PAGE



Human SDF2 Protein (His Tag) SDS-PAGE