

General Information

Protein Construction

A DNA sequence encoding the HIV-1 envelope glycoprotein gp160 (AAT67478.1) extracellular domain (Glu31-Arg494), termed as gp120, was expressed with a polyhistidine tag at the C-terminus.

Organism

HIV

Expression Host

Human Cells

QC Testing

Purity

> 85 % as determined by SDS-PAGE.

Endotoxin

<1.0 EU per µg protein as determined by the LAL method.

Stability

Samples are stable for up to twelve months from date of receipt at -70°C

Predicted N terminal

Glu 31

Molecular Mass

The recombinant HIV-1 envelope glycoprotein gp160 consists 465 amino acids and predicts a

molecular mass of 52.2 kDa.

Formulation

Lyophilized from sterile PBS, pH 7.4.

1. 5 % trehalose and mannitol are added as protectants before lyophilization.

2. Please contact us for any concerns or special requirements.

Usage Guide

Storage

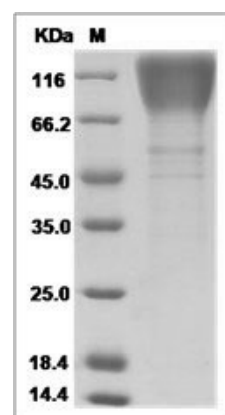
Store it under sterile conditions at -20°C to -80°C.

It is recommended that the protein be aliquoted for optimal storage. Avoid repeated freeze-thaw cycles.

Reconstitution

Adding sterile water, prepare a stock solution of 0.25 mg/ml. Concentration is measured by UV-Vis.

SDS-PAGE



HIV-1 (group M, subtype A, isolate 92RW020) Envelope glycoprotein gp160 Protein (gp120 subunit) (His Tag)