

General Information

Gene Name Synonym

Calcyclin; Growth factor-inducible protein 2A9; MLN 4; Prolactin receptor-associated protein; S100 calcium-binding protein A6

Protein Construction

A DNA sequence encoding the human S100A6 (NP_055439.1) (Met 1-Gly 90) was expressed.

Organism

Human

Expression Host

E. coli

QC Testing

Purity

> 95 % as determined by SDS-PAGE

Endotoxin

Please contact us for more information.

Stability

Samples are stable for up to twelve months from date of receipt at -70°C

Predicted N terminal

Met

Molecular Mass

The recombinant human S100A6 consisting of 90 amino acids and migrates with an apparent molecular mass of 20 & 10 kDa corresponding to dimeric and monomeric form as estimated in SDS-PAGE under Non-reduced condition.

Formulation

Lyophilized from sterile PBS, pH 7.4

1. 5 % trehalose and mannitol are added as protectants before lyophilization.

2. Please contact us for any concerns or special requirements.

Usage Guide

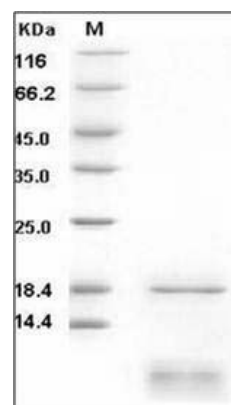
Storage

Store it under sterile conditions at -20°C to -80°C. It is recommended that the protein be aliquoted for optimal storage. Avoid repeated freeze-thaw cycles.

Reconstitution

Adding sterile water, prepare a stock solution of 0.25 mg/ml. Concentration is measured by UV-Vis.

SDS-PAGE



Human S100A6 Protein SDS-PAGE