

Human SPEG/APEG-1 (His Tag) recombinant protein



Catalog Number: 500703

General Information

Gene Name Synonym

Aortic preferentially expressed protein 1

Protein Construction

A DNA sequence encoding the human SPEG isoform 3 (Q15772-4) (Met 1-Glu 113) was fused with a polyhistidine tag at the C-terminus.

Organism

Human

Expression Host

E. coli

QC Testing

Activity

Kinase activity untested

Purity

> 85 % as determined by SDS-PAGE

Endotoxin

Please contact us for more information.

Stability

Samples are stable for up to twelve months from date of receipt at -70°C

Predicted N terminal

Met

Molecular Mass

The recombinant human SPEG consisting of 123 amino acids and has a calculated molecular mass of 14 kDa. It migrates as an approximately 19 kDa band in SDS-PAGE under reducing conditions.

Formulation

Supplied as sterile PBS, pH 7.4

1. 5 % trehalose and mannitol are added as protectants before lyophilization.

2. Please contact us for any concerns or special requirements.

Usage Guide

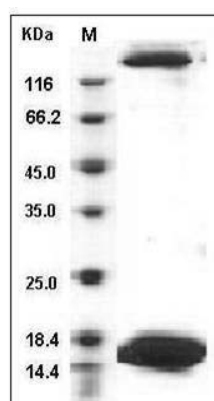
Storage

Store it under sterile conditions at -20°C to -80°C. It is recommended that the protein be aliquoted for optimal storage. Avoid repeated freeze-thaw cycles.

Reconstitution

Adding sterile water, prepare a stock solution of 0.25 mg/ml. Concentration is measured by UV-Vis.

SDS-PAGE



Human SPEG / APEG-1 Protein (His Tag) SDS-PAGE