

Human CD13 / ANPEP (603 Met/Ile, His Tag) recombinant protein



Catalog Number: 500682

General Information

Protein Construction

A DNA sequence encoding the metalloprotease domain (Lys 69-Lys 967/603 Met/Ile) of the mature form of human ANPEP (NP_001141.2) was expressed with N-terminal signal peptide and C-terminal polyhistidine tag.

Organism

Human

Expression Host

Human Cells

QC Testing

Activity

Measured by its ability to cleave the fluorogenic peptide substrate, Ala-7-amido-4-methylcoumarin (Ala-AMC).

The specific activity is >2,500 pmoles/min/μg.

Purity

> 97 % as determined by SDS-PAGE

Endotoxin

< 1.0 EU per μg of the protein as determined by the LAL method

Stability

Samples are stable for up to twelve months from date of receipt at -70°C

Predicted N terminal

Lys 69

Molecular Mass

The recombinant human ANPEP protein consists of 910 amino acids and has a predicted molecular mass of 104.2 kDa. In SDS-PAGE under reducing conditions, the apparent molecular mass of rhANPEP is approximately 135-140 kDa due to glycosylation.

Formulation

Lyophilized from sterile PBS, pH 7.3

1. 5 % trehalose and mannitol are added as protectants before lyophilization.

2. Please contact us for any concerns or special requirements.

Usage Guide

Storage

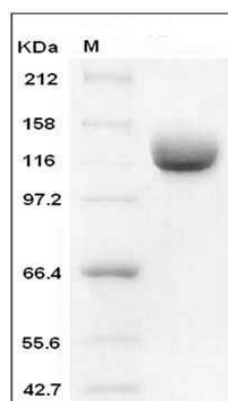
Store it under sterile conditions at -20°C to -80°C.

It is recommended that the protein be aliquoted for optimal storage. Avoid repeated freeze-thaw cycles.

Reconstitution

Adding sterile water, prepare a stock solution of 0.25 mg/ml. Concentration is measured by UV-Vis.

SDS-PAGE



Human ANPEP / CD13 Protein (603 Met/Ile, His Tag) SDS-PAGE