

# Human Cathepsin L/CTSL1 (His Tag) recombinant protein



Catalog Number: 500662

## General Information

### Protein Construction

A DNA sequence encoding the pro form of human Cathepsin-L1 (NP\_001903.1) (Met 1-Val 333) was expressed, fused with a polyhistidine tag at the C-terminus.

### Organism

Human

### Expression Host

Human Cells

## QC Testing

### Activity

Measured by its binding ability in a functional ELISA. Immobilized human CD74 at 5 µg/ml (100 µl/well) can bind biotinylated human CTSL1 with a linear range of 3.2-400 ng/ml.

### Purity

> 90 % as determined by SDS-PAGE

### Endotoxin

< 1.0 EU per µg of the protein as determined by the LAL method

### Stability

Samples are stable for up to twelve months from date of receipt at -70°C

### Predicted N terminal

Thr 18

### Molecular Mass

The recombinant human CTSL1 consists of 327 amino acids and has a predicted molecular mass of 37.3 kDa. In SDS-PAGE under reducing conditions, the apparent molecular mass of recombinant human CTSL1 is approximately 37 kDa.

### Formulation

Lyophilized from sterile 50 mM NaAc, 100 mM NaCl, pH 7.5.

1. 5 % trehalose and mannitol are added as protectants before lyophilization.
2. Please contact us for any concerns or special requirements.

## Usage Guide

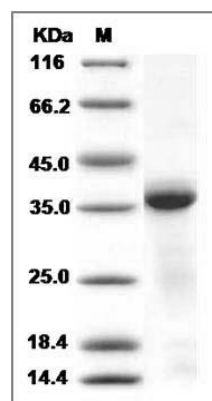
### Storage

Store it under sterile conditions at -20°C to -80°C. It is recommended that the protein be aliquoted for optimal storage. Avoid repeated freeze-thaw cycles.

### Reconstitution

Adding sterile water, prepare a stock solution of 0.25 mg/ml. Concentration is measured by UV-Vis.

### SDS-PAGE



Human Cathepsin L1 / CTSL1 Protein (His Tag)  
SDS-PAGE