

General Information

Gene Name Synonym

Collectin-1; MBP1; Mannan-binding protein;
Mannose-binding lectin

Protein Construction

A DNA sequence encoding the human MBL (NP_000233.1) (Met1-Ile 248) was expressed.

Organism

Human

Expression Host

CHO Stable Cells

QC Testing

Purity

> 95 % as determined by SDS-PAGE

Endotoxin

< 1.0 EU per μg of the protein as determined by the LAL method

Stability

Samples are stable for up to twelve months from date of receipt at -70°C

Predicted N terminal

Glu 21

Molecular Mass

The recombinant human MBL consists of 228 amino acids and predicts a molecular mass of 24 KDa. It migrates as an approximately 31 KDa band in SDS-PAGE under reducing conditions.

Formulation

Lyophilized from sterile PBS, pH 7.4.

1. 5 % trehalose and mannitol are added as protectants before lyophilization.

2. Please contact us for any concerns or special requirements.

Usage Guide

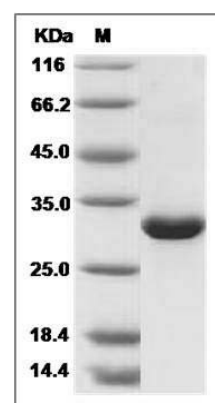
Storage

Store it under sterile conditions at -20°C to -80°C . It is recommended that the protein be aliquoted for optimal storage. Avoid repeated freeze-thaw cycles.

Reconstitution

Adding sterile water, prepare a stock solution of 0.25 mg/ml. Concentration is measured by UV-Vis.

SDS-PAGE



Human MBL2 / MBL / COLEC1 Protein SDS-PAGE