

Mouse GM-CSF / CSF2 recombinant protein



Catalog Number: 500633

General Information

Gene Name Synonym

Colony-stimulating factor

Protein Construction

A DNA sequence encoding the mouse CSF2 (NP_034099.2) (Met1-Lys141) was expressed.

Organism

Mouse

Expression Host

Human Cells

QC Testing

Activity

Measured in a cell proliferation assay using FDC-P1 cells.

The ED₅₀ for this effect is typically 0.012-0.047 ng/mL.

Purity

> 95 % as determined by SDS-PAGE

Endotoxin

< 1.0 EU per µg of the protein as determined by the LAL method

Stability

Samples are stable for up to twelve months from date of receipt at -70°C

Predicted N terminal

Ala 18

Molecular Mass

The recombinant mouse CSF2 consists of 124 amino acids and predicts a molecular mass of 14.1 KDa. It migrates as an approximately 20.7 KDa band in SDS-PAGE under reducing conditions.

Formulation

Lyophilized from sterile PBS, pH 7.4.

1. 5 % trehalose and mannitol are added as protectants before lyophilization.

2. Please contact us for any concerns or special requirements.

Usage Guide

Storage

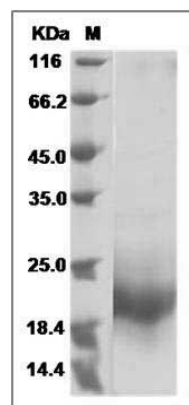
Store it under sterile conditions at -20°C to -80°C.

It is recommended that the protein be aliquoted for optimal storage. Avoid repeated freeze-thaw cycles.

Reconstitution

Adding sterile water, prepare a stock solution of 0.25 mg/ml. Concentration is measured by UV-Vis.

SDS-PAGE



Mouse GM-CSF / CSF2 Protein SDS-PAGE