

Human CD62L/L-Selectin (His Tag) recombinant protein



Catalog Number: 500609

General Information

Gene Name Synonym

CD62 antigen-like family member L; Leukocyte adhesion molecule 1; Leukocyte surface antigen Leu-8; Leukocyte-endothelial cell adhesion molecule 1; Lymph node homing receptor; TQ1; gp90-MEL

Protein Construction

A DNA sequence encoding the human SELL (P14151-1) extracellular domain (Met 1-Asn 332) was expressed, with a polyhistidine tag at the C-terminus.

Organism

Human

Expression Host

Human Cells

QC Testing

Activity

Measured by its ability to bind biotinylated human CD34 in a functional ELISA.

Purity

> 97 % as determined by SDS-PAGE

Endotoxin

< 1.0 EU per µg of the protein as determined by the LAL method

Stability

Samples are stable for up to twelve months from date of receipt at -70°C

Predicted N terminal

Trp 39

Molecular Mass

The secreted recombinant human SELL consists of 305 amino acids and predicts a molecular mass of 34.5 kDa. In SDS-PAGE under reducing conditions, the apparent molecular mass of rhSELL is approximately 55-65 kDa due to glycosylation.

Formulation

Lyophilized from sterile PBS, pH 7.4

1. 5 % trehalose and mannitol are added as protectants before lyophilization.

2. Please contact us for any concerns or special requirements.

Usage Guide

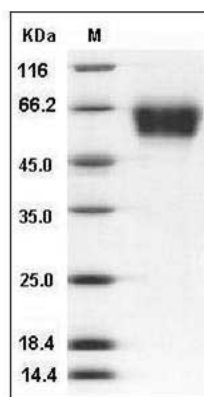
Storage

Store it under sterile conditions at -20°C to -80°C. It is recommended that the protein be aliquoted for optimal storage. Avoid repeated freeze-thaw cycles.

Reconstitution

Adding sterile water, prepare a stock solution of 0.25 mg/ml. Concentration is measured by UV-Vis.

SDS-PAGE



Human CD62L / L-Selectin / SELL Protein (His Tag) SDS-PAGE