

# Mouse Cathepsin B/CTSB (His Tag) recombinant protein



Catalog Number: 500574

## General Information

### Gene Name Synonym

Cathepsin B1; Cathepsin B light chain; Cathepsin B heavy chain

### Protein Construction

A DNA sequence encoding the mouse CTSB (P10605) (Met 1-Phe 339) was fused with a polyhistidine tag at the C-terminus.

### Organism

Mouse

### Expression Host

Human Cells

## QC Testing

### Activity

Measured by its ability to cleave the fluorogenic peptide substrate Z-LR-AMC (R&D Systems, Catalog # ES008). The specific activity is >2,000 pmoles/min/ $\mu$ g.

### Purity

> 95 % as determined by SDS-PAGE

### Endotoxin

< 1.0 EU per  $\mu$ g of the protein as determined by the LAL method

### Stability

Samples are stable for up to twelve months from date of receipt at -70°C

### Predicted N terminal

His 18

### Molecular Mass

The secreted recombinant mouse CTSB (pro form) consists of 333 amino acids and has a predicted molecular mass of 36.6 kDa. In SDS-PAGE under reducing conditions, the apparent molecular mass of rm CTSB is approximately 35-43 kDa due to glycosylation.

### Formulation

Lyophilized from sterile PBS, pH 7.4

1. 5 % trehalose and mannitol are added as protectants before lyophilization.

2. Please contact us for any concerns or special requirements.

## Usage Guide

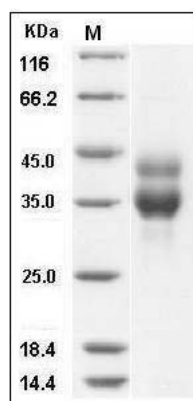
### Storage

Store it under sterile conditions at -20°C to -80°C. It is recommended that the protein be aliquoted for optimal storage. Avoid repeated freeze-thaw cycles.

### Reconstitution

Adding sterile water, prepare a stock solution of 0.25 mg/ml. Concentration is measured by UV-Vis.

### SDS-PAGE



Mouse Cathepsin B / CTSB Protein (His Tag) SDS-PAGE