

# Mouse EphB6/Eph Receptor B6 (His Tag) recombinant protein



Catalog Number: 500561

## General Information

### Gene Name Synonym

MEP; Tyrosine-protein kinase-defective receptor  
EPH-6

### Protein Construction

A DNA sequence encoding the mouse EPHB6  
(O08644-1) (Met1-Ser587) was expressed with a  
C-terminal polyhistidine tag.

### Organism

Mouse

### Expression Host

Human Cells

## QC Testing

### Activity

1. Immobilized mouse EPHB6-His at 10 µg/ml (100  
µl/well) can bind mouse EFNB1-Fc (Cat:503291),  
The EC<sub>50</sub> of mouse EFNB1-Fc (Cat:503291) is  
0.12-0.28 µg/ml.

2. Immobilized mouse EPHB6-His at 10 µg/ml (100  
µl/well) can bind mouse EFNB2-Fc (Cat:504064),  
The EC<sub>50</sub> of mouse EFNB2-Fc (Cat:504064) is  
0.04-0.08 µg/ml.

### Purity

(16.4+73.1) % as determined by SDS-PAGE

### Endotoxin

< 1.0 EU per µg of the protein as determined by  
the LAL method

### Stability

Samples are stable for up to twelve months from  
date of receipt at -70°C

### Predicted N terminal

Leu 33

### Molecular Mass

The recombinant mouse EPHB6 comprises 566  
amino acids and has a predicted molecular mass  
of 61.1 kDa. The apparent molecular mass of the  
protein is approximately 91 and 65 kDa in SDS-  
PAGE under reducing conditions.

### Formulation

Lyophilized from sterile PBS, pH 7.4.

1. 5 % trehalose and mannitol are added as  
protectants before lyophilization.

2. Please contact us for any concerns or special  
requirements.

## Usage Guide

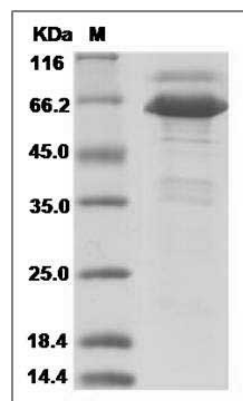
### Storage

Store it under sterile conditions at -20°C to -80°C.  
It is recommended that the protein be aliquoted  
for optimal storage. Avoid repeated freeze-thaw  
cycles.

### Reconstitution

Adding sterile water, prepare a stock solution of  
0.25 mg/ml. Concentration is measured by UV-Vis.

### SDS-PAGE



Mouse EphB6 Protein (His Tag) SDS-PAGE