

General Information

Gene Name Synonym

A-chimaerin; Alpha-chimerin; N-chimerin; Rho GTPase-activating protein 2

Protein Construction

A DNA sequence encoding the human CHN1 (NP_001813.1) (Ala2-Phe459) was fused with two additional amino acids (Gly&Pro) at the N-terminus.

Organism

Human

Expression Host

Baculovirus-Insect Cells

QC Testing

Purity

> 90 % as determined by SDS-PAGE

Endotoxin

< 1.0 EU per μg of the protein as determined by the LAL method

Stability

Samples are stable for up to twelve months from date of receipt at -70°C

Predicted N terminal

Gly

Molecular Mass

The recombinant human CHN1 consists of 460 amino acids and has a calculated molecular mass of 53.2 kDa. The recombinant protein migrates as an approximately 45 kDa band in SDS-PAGE under reducing conditions.

Formulation

Lyophilized from sterile 20mM Tris, 500mM NaCl, 10% glycerol, pH 7.4.

1. 5 % trehalose and mannitol are added as protectants before lyophilization.
2. Please contact us for any concerns or special requirements.

Usage Guide

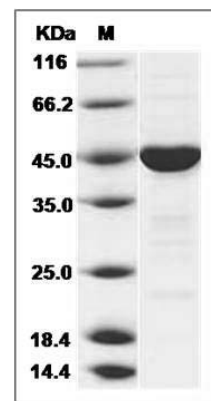
Storage

Store it under sterile conditions at -20°C to -80°C . It is recommended that the protein be aliquoted for optimal storage. Avoid repeated freeze-thaw cycles.

Reconstitution

Adding sterile water, prepare a stock solution of 0.25 mg/ml. Concentration is measured by UV-Vis.

SDS-PAGE



Human CHN1 / Chimerin 1 Protein SDS-PAGE