

# Human B7-H5 / GI24 / VISTA (His Tag) recombinant protein



Catalog Number: 500475

## General Information

### Gene Name Synonym

Stress-induced secreted protein-1

### Protein Construction

A DNA sequence encoding the human Gi24 (AAH20568.1) (Met1-Ala194) was expressed with a polyhistidine tag at the C-terminus.

### Organism

Human

### Expression Host

Human Cells

## QC Testing

### Purity

> 95 % as determined by SDS-PAGE

### Endotoxin

< 1.0 EU per µg of the protein as determined by the LAL method

### Stability

Samples are stable for up to twelve months from date of receipt at -70°C

### Predicted N terminal

Phe 33

### Molecular Mass

The recombinant human Gi24 consists of 173

amino acids and predicts a molecular mass of 19.6 KDa. It migrates as an approximately 38-42 KDa band in SDS-PAGE under reducing conditions.

### Formulation

Lyophilized from sterile PBS, pH 7.4

1. 5 % trehalose and mannitol are added as protectants before lyophilization.

2. Please contact us for any concerns or special requirements.

## Usage Guide

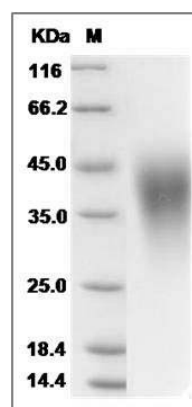
### Storage

Store it under sterile conditions at -20°C to -80°C. It is recommended that the protein be aliquoted for optimal storage. Avoid repeated freeze-thaw cycles.

### Reconstitution

Adding sterile water, prepare a stock solution of 0.25 mg/ml. Concentration is measured by UV-Vis.

### SDS-PAGE



Human C10orf54 / GI24 Protein (His Tag) SDS-PAGE