

Human DKKL1 / Soggy-1 / SGY-1 (Fc Tag) recombinant protein



Catalog Number: 500470

General Information

Gene Name Synonym

Cancer/testis antigen 34; Protein soggy-1

Protein Construction

A DNA sequence encoding the secreted form of human DKKL1 (Q9UK85) (Ala 31-Leu 242) was expressed with the fused Fc region of human IgG1 at the N-terminus.

Organism

Human

Expression Host

Human Cells

QC Testing

Activity

Measured by its ability to inhibit proliferation of HeLa human cervical epithelial carcinoma cells. The ED₅₀ for this effect is typically 5-15 µg/ml.

Purity

> 70 % as determined by SDS-PAGE

Endotoxin

< 1.0 EU per µg of the protein as determined by the LAL method

Stability

Samples are stable for up to twelve months from date of receipt at -70°C

Predicted N terminal

Glu

Molecular Mass

The recombinant human DKKL1/Fc chimera is a disulfide-linked homodimeric protein. The reduced monomer consists of 472 amino acids and has a predicted molecular mass of 52.4 kDa. rhDKKL1/Fc monomer migrates as an approximately 60 kDa protein in SDS-PAGE under reducing conditions.

Formulation

Lyophilized from sterile PBS, pH 7.4

1. 5 % trehalose and mannitol are added as protectants before lyophilization.

2. Please contact us for any concerns or special requirements.

Usage Guide

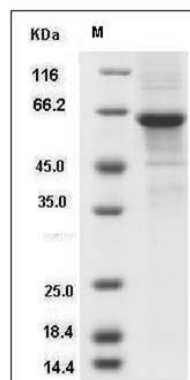
Storage

Store it under sterile conditions at -20°C to -80°C. It is recommended that the protein be aliquoted for optimal storage. Avoid repeated freeze-thaw cycles.

Reconstitution

Adding sterile water, prepare a stock solution of 0.25 mg/ml. Concentration is measured by UV-Vis.

SDS-PAGE



Human DKKL1 / Soggy-1 / SGY-1 Protein (Fc Tag)
SDS-PAGE