

Human IL-22BP/IL-22RA2 (His & Fc Tag) recombinant protein



Catalog Number: 500468

General Information

Gene Name Synonym

Cytokine receptor class-II member 10; Cytokine receptor family 2 member 10; Cytokine receptor family type 2, soluble 1; Interleukin-22-binding protein; ZcytoR16

Protein Construction

A DNA sequence encoding the human IL22RA2 isoform 2 (NP_851826.1) (Met 1-Pro 231) was fused with the C-terminal polyhistidine-tagged Fc region of human IgG1 at the C-terminus.

Organism

Human

Expression Host

Human Cells

QC Testing

Purity

> 90 % as determined by SDS-PAGE

Endotoxin

< 1.0 EU per µg of the protein as determined by the LAL method

Stability

Samples are stable for up to twelve months from date of receipt at -70°C

Predicted N terminal

Thr 22

Molecular Mass

The recombinant human IL22RA2/Fc chimera is a disulfide-linked homodimer. The reduced monomer comprises 458 amino acids and has a predicted molecular mass of 52.8 kDa. As a result of glycosylation, rh IL22RA2/Fc monomer migrates as an approximately 80-90 kDa band in SDS-PAGE under reducing conditions.

Formulation

Lyophilized from sterile PBS, pH 7.4

1. 5 % trehalose and mannitol are added as protectants before lyophilization.

2. Please contact us for any concerns or special requirements.

Usage Guide

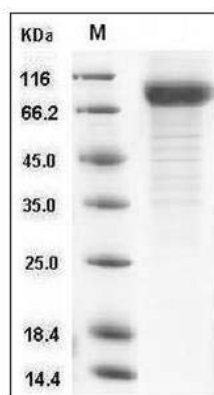
Storage

Store it under sterile conditions at -20°C to -80°C. It is recommended that the protein be aliquoted for optimal storage. Avoid repeated freeze-thaw cycles.

Reconstitution

Adding sterile water, prepare a stock solution of 0.25 mg/ml. Concentration is measured by UV-Vis.

SDS-PAGE



Human IL22BP / IL22RA2 Protein (His & Fc Tag)
SDS-PAGE