

Mouse Carboxypeptidase B1/CPB1 (His Tag) recombinant protein



Catalog Number: 500461

General Information

Gene Name Synonym

Carboxypeptidase B1 (Tissue), isoform CRA_b;
Protein Cpb1

Protein Construction

A DNA sequence encoding the mouse CPB1 (NP_083982.1) precursor (Met 1-Tyr 415) was expressed, with a C-terminal polyhistidine tag.

Organism

Mouse

Expression Host

Human Cells

QC Testing

Activity

Measured by its ability to cleave a colorimetric peptide substrate, Hippuryl-Arg. The specific activity is >5,000 pmoles/min/ μ g.

Purity

> 94 % as determined by SDS-PAGE

Endotoxin

< 1.0 EU per μ g of the protein as determined by the LAL method

Stability

Samples are stable for up to twelve months from date of receipt at -70°C

Predicted N terminal

Ser 16

Molecular Mass

The secreted recombinant mouse CPB1 comprises 411 amino acids with a predicted molecular mass of 47.5 kDa. The apparent molecular mass of rm CPB1 is approximately 43-45 kDa in SDS-PAGE under reducing conditions.

Formulation

Lyophilized from sterile 20mM MES, 150mM NaCl, pH 6.5

1. 5 % trehalose and mannitol are added as protectants before lyophilization.
2. Please contact us for any concerns or special requirements.

Usage Guide

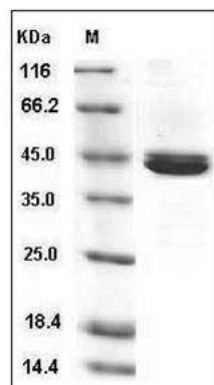
Storage

Store it under sterile conditions at -20°C to -80°C. It is recommended that the protein be aliquoted for optimal storage. Avoid repeated freeze-thaw cycles.

Reconstitution

Adding sterile water, prepare a stock solution of 0.25 mg/ml. Concentration is measured by UV-Vis.

SDS-PAGE



Mouse Carboxypeptidase B1 / CPB1 Protein (His Tag) SDS-PAGE