

# Human Caspase-7/MCH3 (His Tag) recombinant protein



Catalog Number: 500458

## General Information

### Gene Name Synonym

Apoptotic protease Mch-3; CMH-1; ICE-like apoptotic protease 3; Caspase-7 subunit p20; Caspase-7 subunit p11

### Protein Construction

A DNA sequence encoding the human CASP7 (P55210-1) (Met 1-Gln 303) was fused with a polyhistidine tag at the C-terminus.

### Organism

Human

### Expression Host

E. coli

## QC Testing

### Activity

Not tested

### Purity

> 90 % as determined by SDS-PAGE

### Endotoxin

Please contact us for more information.

### Stability

Samples are stable for up to twelve months from date of receipt at -70°C

### Predicted N terminal

Ala 24 & Ala 207

### Molecular Mass

The full length of recombinant human CASP7

comprises 313 amino acids and has a calculated molecular mass of 35KDa. As a result of proteolytic cleavage, the apparent molecular mass of the protein is approximately 20 & 11 kDa, corresponding to the N-terminal P20 subunit and the C-terminal p11 subunit respectively in SDS-PAGE under reducing conditions.

### Formulation

Lyophilized from sterile 20mM HEPES, 100mM NaCl, 1mM EDTA, 0.10% Sucrose, 0.1% chaps, pH 7.5

1. 5 % trehalose and mannitol are added as protectants before lyophilization.

2. Please contact us for any concerns or special requirements.

## Usage Guide

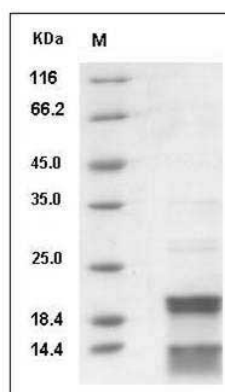
### Storage

Store it under sterile conditions at -20°C to -80°C. It is recommended that the protein be aliquoted for optimal storage. Avoid repeated freeze-thaw cycles.

### Reconstitution

Adding sterile water, prepare a stock solution of 0.25 mg/ml. Concentration is measured by UV-Vis.

### SDS-PAGE



Human CASP7 / caspase 7 / MCH3 Protein (His Tag) SDS-PAGE