

Rhesus IL-6 recombinant protein



Catalog Number: 500404

General Information

Protein Construction

A DNA sequence encoding the the rhesus IL6 (NP_001036198.2) (Pro29-Met212) was expressed and purified.

Organism

Rhesus

Expression Host

E. coli

QC Testing

Activity

Measured in a cell proliferation assay using TF-1 human erythroleukemic cells.
The ED₅₀ for this effect is typically 0.3-1.5 ng/mL.

Purity

> 85 % as determined by SDS-PAGE

Endotoxin

Please contact us for more information.

Stability

Samples are stable for up to twelve months from date of receipt at -70°C

Predicted N terminal

Met

Molecular Mass

The recombinant rhesus IL6 consists of 185 amino acids and has a calculated molecular mass of 21 kDa.

Formulation

Lyophilized from sterile 50% acetonitrile, 0.1% TFA

1. 5 % trehalose and mannitol are added as protectants before lyophilization.

2. Please contact us for any concerns or special requirements.

Usage Guide

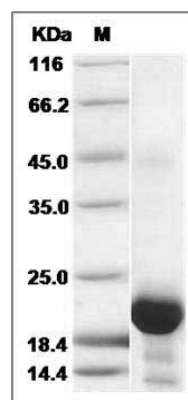
Storage

Store it under sterile conditions at -20°C to -80°C. It is recommended that the protein be aliquoted for optimal storage. Avoid repeated freeze-thaw cycles.

Reconstitution

Adding sterile water, prepare a stock solution of 0.25 mg/ml. Concentration is measured by UV-Vis.

SDS-PAGE



Cynomolgus / Rhesus IL6 / Interleukin-6 Protein
SDS-PAGE