

Human Adipsin/Complement Factor D (His Tag) recombinant protein



Catalog Number: 500378

General Information

Gene Name Synonym

Adipsin; C3 convertase activator; Properdin factor D

Protein Construction

A DNA sequence encoding the mature form of human CFD (P00746) (Ile 26-Ala 253) was fused with a C-terminal polyhistidine tag and a signal peptide at the N-terminus.

Organism

Human

Expression Host

Human Cells

QC Testing

Purity

> 97 % as determined by SDS-PAGE

Endotoxin

< 1.0 EU per μg of the protein as determined by the LAL method

Stability

Samples are stable for up to twelve months from date of receipt at -70°C

Predicted N terminal

Ile 26

Molecular Mass

The secreted recombinant human CFD consists of 239 amino acids and predicts a molecular mass of 25.8 kDa. As a result of glycosylation, rh CFD migrates as an approximately 33 kDa band in SDS-PAGE under reducing conditions.

Formulation

Lyophilized from sterile PBS, pH 7.4

1. 5 % trehalose and mannitol are added as protectants before lyophilization.
2. Please contact us for any concerns or special requirements.

Usage Guide

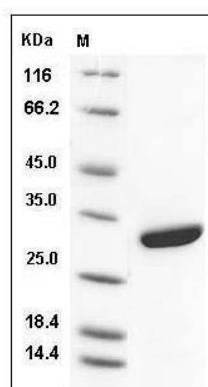
Storage

Store it under sterile conditions at -20°C to -80°C . It is recommended that the protein be aliquoted for optimal storage. Avoid repeated freeze-thaw cycles.

Reconstitution

Adding sterile water, prepare a stock solution of 0.25 mg/ml. Concentration is measured by UV-Vis.

SDS-PAGE



Human Adipsin / Complement Factor D / CFD Protein (His Tag) SDS-PAGE