

Human PLA2G2A (His Tag) recombinant protein



Catalog Number: 500292

General Information

Protein Construction

A DNA sequence encoding the human PLA2G2A (NP_000291.1) (Met 1-Cys 144) was expressed, with a polyhistidine tag at the C-terminus.

Organism

Human

Expression Host

Human Cells

QC Testing

Purity

> 97 % as determined by SDS-PAGE

Endotoxin

< 1.0 EU per μ g of the protein as determined by the LAL method

Stability

Samples are stable for up to twelve months from date of receipt at -70°C

Predicted N terminal

Asn 21

Molecular Mass

The recombinant human PLA2G2A consists of 135 amino acids and predicts a molecular mass of 15.4 kDa. In SDS-PAGE under reducing

conditions, rh PLA2G2A migrates as an approximately 19 kDa band due to glycosylation.

Formulation

Lyophilized from sterile PBS, pH 7.4

1. 5 % trehalose and mannitol are added as protectants before lyophilization.

2. Please contact us for any concerns or special requirements.

Usage Guide

Storage

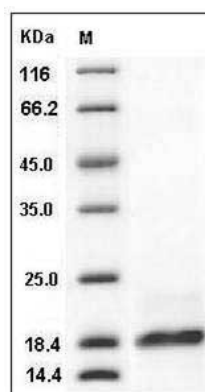
Store it under sterile conditions at -20°C to -80°C.

It is recommended that the protein be aliquoted for optimal storage. Avoid repeated freeze-thaw cycles.

Reconstitution

Adding sterile water, prepare a stock solution of 0.25 mg/ml. Concentration is measured by UV-Vis.

SDS-PAGE



Human PLA2G2A / PLA2B Protein (His Tag) SDS-PAGE