

General Information

Gene Name Synonym

Attachment glycoprotein G; Membrane-bound glycoprotein

Protein Construction

A DNA sequence encoding the glycoprotein G extracellular domain (Asn 66-Arg297) of human respiratory syncytial virus A (93% homologous with strain rsb1734) (P27022-1) was expressed, with a C-terminal polyhistidine tag.

Organism

RSV

Expression Host

Baculovirus-Insect Cells

QC Testing

Purity

> 92 % as determined by SDS-PAGE

Endotoxin

< 1.0 EU per μg of the protein as determined by the LAL method

Stability

Samples are stable for up to twelve months from date of receipt at -70°C

Predicted N terminal

Asn 66

Molecular Mass

The secreted recombinant human RSV-G

comprises 242 amino acids and has a predicted molecular mass of 26.3 kDa. As a result of glycosylation, the apparent molecular mass of RSV protein G is approximately 40-55 kDa in SDS-PAGE under reducing conditions.

Formulation

Lyophilized from sterile 50mM Tris, 100mM NaCl, pH 8.0, 10% glycerol, 0.5mM EDTA, 0.5mM PMSF
1. 5 % trehalose and mannitol are added as protectants before lyophilization.
2. Please contact us for any concerns or special requirements.

Usage Guide

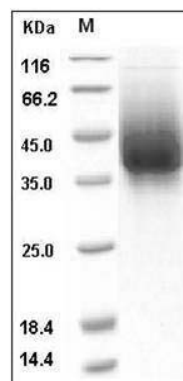
Storage

Store it under sterile conditions at -20°C to -80°C . It is recommended that the protein be aliquoted for optimal storage. Avoid repeated freeze-thaw cycles.

Reconstitution

Adding sterile water, prepare a stock solution of 0.25 mg/ml. Concentration is measured by UV-Vis.

SDS-PAGE



Human RSV (A, rsb1734) glycoprotein G / RSV-G Protein (93% Homology) (His Tag) SDS-PAGE