

# Mouse PSMB6 / Proteasome subunit beta type-6 (His Tag) recombinant protein



Catalog Number: 500266

## General Information

### Gene Name Synonym

Low molecular mass protein 19; Macropain delta chain; Multicatalytic endopeptidase complex delta chain; Proteasome delta chain; Proteasome subunit Y

### Protein Construction

A DNA sequence encoding the mouse Psmb6 (NP\_032972.3) (Thr34-Pro238) was expressed with a polyhistidine tag at the N-terminus.

### Organism

Mouse

### Expression Host

E. coli

## QC Testing

### Purity

> 90 % as determined by SDS-PAGE.

### Endotoxin

Please contact us for more information.

### Stability

Samples are stable for up to twelve months from date of receipt at -70°C

### Predicted N terminal

Met

## Molecular Mass

The recombinant mouse Psmb6 consists 223 amino acids and predicts a molecular mass of 24.2 kDa.

### Formulation

Lyophilized from sterile PBS, pH 7.4.

1. 5 % trehalose and mannitol are added as protectants before lyophilization.
2. Please contact us for any concerns or special requirements.

## Usage Guide

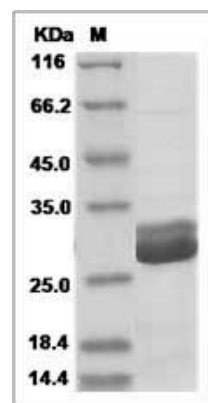
### Storage

Store it under sterile conditions at -20°C to -80°C. It is recommended that the protein be aliquoted for optimal storage. Avoid repeated freeze-thaw cycles.

### Reconstitution

Adding sterile water, prepare a stock solution of 0.25 mg/ml. Concentration is measured by UV-Vis.

## SDS-PAGE



Psmb6 protein SDS-PAGE