

Human SBEM / MUCL1 (His Tag) recombinant protein



Catalog Number: 500259

General Information

Gene Name Synonym

Protein BS106; Small breast epithelial mucin

Protein Construction

A DNA sequence encoding the human MUCL1 (NP_477521.1) (Met1-Pro90) was expressed with a polyhistidine tag at the C-terminus.

Organism

Human

Expression Host

Human Cells

QC Testing

Purity

> 95 % as determined by SDS-PAGE.

Endotoxin

<1.0 EU per μg protein as determined by the LAL method.

Stability

Samples are stable for up to twelve months from date of receipt at -70°C

Predicted N terminal

Asn 21

Molecular Mass

The recombinant human MUCL1 consists 81 amino acids and predicts a molecular mass of 8.4 kDa.

Formulation

Lyophilized from sterile PBS, pH 7.4.

1. 5 % trehalose and mannitol are added as protectants before lyophilization.

2. Please contact us for any concerns or special requirements.

Usage Guide

Storage

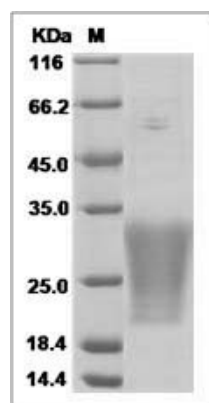
Store it under sterile conditions at -20°C to -80°C .

It is recommended that the protein be aliquoted for optimal storage. Avoid repeated freeze-thaw cycles.

Reconstitution

Adding sterile water, prepare a stock solution of 0.25 mg/ml. Concentration is measured by UV-Vis.

SDS-PAGE



MUCL1 protein SDS-PAGE