

Human PGDH/PHGDH (His Tag) recombinant protein



Catalog Number: 500223

General Information

Protein Construction

A DNA sequence encoding the mature form of human PHGDH (O43175) (Met 1-Phe 533) was fused with a polyhistidine tag at the C-terminus and an initial Met at the N-terminus.

Organism

Human

Expression Host

E. coli

QC Testing

Purity

> 90 % as determined by SDS-PAGE

Endotoxin

Please contact us for more information.

Stability

Samples are stable for up to twelve months from date of receipt at -70°C

Predicted N terminal

Met

Molecular Mass

The recombinant human PHGDH comprises 543 amino acids and has a calculated molecular mass of 58kDa. It migrates as an approximately 55 kDa

band in SDS-PAGE under reducing conditions.

Formulation

Lyophilized from sterile PBS, 100mM Arg, 0.1% Tween20, 20% glycerol, pH 8.0

1. 5 % trehalose and mannitol are added as protectants before lyophilization.
2. Please contact us for any concerns or special requirements.

Usage Guide

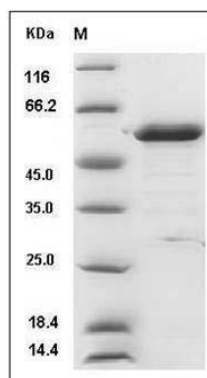
Storage

Store it under sterile conditions at -20°C to -80°C. It is recommended that the protein be aliquoted for optimal storage. Avoid repeated freeze-thaw cycles.

Reconstitution

Adding sterile water, prepare a stock solution of 0.25 mg/ml. Concentration is measured by UV-Vis.

SDS-PAGE



Human PGDH / PHGDH Protein (His Tag) SDS-PAGE