

# Human SELP / P Selectin (Fc Tag) recombinant protein



Catalog Number: 500210

## General Information

### Gene Name Synonym

CD62 antigen-like family member P; Granule membrane protein 140; Leukocyte-endothelial cell adhesion molecule 3; Platelet activation dependent granule-external membrane protein

### Protein Construction

A DNA sequence encoding the human SELP (AAN06828.1) extracellular domain (Met 1-Ala 771) was fused with the Fc region of human IgG1 at the C-terminus.

### Organism

Human

### Expression Host

Human Cells

## QC Testing

### Activity

Measured by the ability of the immobilized protein to support the adhesion of U937 human histiocytic lymphoma cells. When  $5 \times 10^4$  cells/well are added to SELP/Fc Chimera coated plates (10  $\mu\text{g}/\text{mL}$  with 100  $\mu\text{L}/\text{well}$ ), > 80% cells will adhere for 1 hour incubation at 37°C.

### Purity

> 85 % as determined by SDS-PAGE

### Endotoxin

< 1.0 EU per  $\mu\text{g}$  of the protein as determined by the LAL method

### Stability

Samples are stable for up to twelve months from date of receipt at -70°C

## Predicted N terminal

Trp 42

## Molecular Mass

The recombinant human SELP/Fc is a disulfide-linked homodimeric protein. The reduced monomer consists of 971 amino acids and has a predicted molecular mass of 107 kDa. The apparent molecular mass of the reduced monomer is approximately 130-150 kDa in SDS-PAGE under reducing conditions due to glycosylation.

## Formulation

Lyophilized from sterile PBS, pH 7.4  
1. 5 % trehalose and mannitol are added as protectants before lyophilization.  
2. Please contact us for any concerns or special requirements.

## Usage Guide

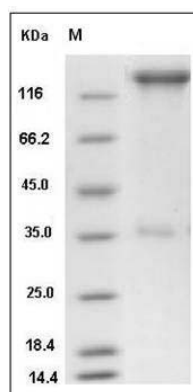
### Storage

Store it under sterile conditions at -20°C to -80°C. It is recommended that the protein be aliquoted for optimal storage. Avoid repeated freeze-thaw cycles.

### Reconstitution

Adding sterile water, prepare a stock solution of 0.25 mg/ml. Concentration is measured by UV-Vis.

## SDS-PAGE



# Human SELP / P Selectin (Fc Tag) recombinant protein



Catalog Number: 500210

---

Human SELP / selectin P / P-selectin Protein (Fc Tag) SDS-PAGE