

Human LMAN2L (Fc Tag) recombinant protein



Catalog Number: 500196

General Information

Gene Name Synonym

Lectin mannose-binding 2-like

Protein Construction

A DNA sequence encoding the human LMAN2L (NP_110432.1) (Met1-Ala304) was expressed with the Fc region of human IgG1 at the C-terminus.

Organism

Human

Expression Host

Human Cells

QC Testing

Purity

> 80 % as determined by SDS-PAGE

Endotoxin

< 1.0 EU per μ g of the protein as determined by the LAL method

Stability

Samples are stable for up to twelve months from date of receipt at -70°C

Predicted N terminal

Gly 45

Molecular Mass

The recombinant human LMAN2L/Fc is a

disulfide-linked homodimer. The reduced monomer comprises 501 amino acids and has a predicted molecular mass of 56.9 kDa. The apparent molecular mass of the protein is approximately 63 kDa in SDS-PAGE under reducing conditions.

Formulation

Lyophilized from sterile PBS, pH 7.4

1. 5 % trehalose and mannitol are added as protectants before lyophilization.

2. Please contact us for any concerns or special requirements.

Usage Guide

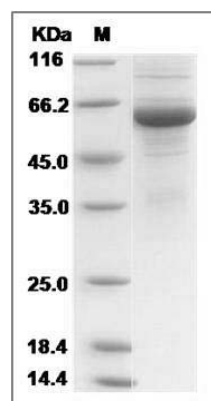
Storage

Store it under sterile conditions at -20°C to -80°C. It is recommended that the protein be aliquoted for optimal storage. Avoid repeated freeze-thaw cycles.

Reconstitution

Adding sterile water, prepare a stock solution of 0.25 mg/ml. Concentration is measured by UV-Vis.

SDS-PAGE



Human LMAN2L Protein (Fc Tag) SDS-PAGE