

## General Information

### Gene Name Synonym

Small-inducible cytokine A21

### Protein Construction

A DNA sequence encoding the rhesus CCL21 (NP\_001028027.1) (Met 1-Pro131) was expressed and purified.

### Organism

Rhesus

### Expression Host

Baculovirus-Insect Cells

## QC Testing

### Purity

> 94 % as determined by SDS-PAGE

### Endotoxin

< 1.0 EU per  $\mu\text{g}$  of the protein as determined by the LAL method

### Stability

Samples are stable for up to twelve months from date of receipt at  $-70^{\circ}\text{C}$

### Predicted N terminal

Ser 24

### Molecular Mass

The recombinant rhesus CCL21 consists of 108 amino acids and has a calculated molecular mass of 12 kDa.

### Formulation

Lyophilized from sterile PBS

1. 5 % trehalose and mannitol are added as protectants before lyophilization.

2. Please contact us for any concerns or special requirements.

## Usage Guide

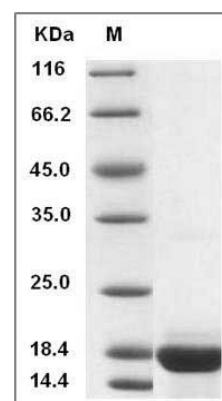
### Storage

Store it under sterile conditions at  $-20^{\circ}\text{C}$  to  $-80^{\circ}\text{C}$ . It is recommended that the protein be aliquoted for optimal storage. Avoid repeated freeze-thaw cycles.

### Reconstitution

Adding sterile water, prepare a stock solution of 0.25 mg/ml. Concentration is measured by UV-Vis.

### SDS-PAGE



Cynomolgus CCL21 / 6Ckine Protein SDS-PAGE