

Human PHOSPHO1 (His Tag) recombinant protein



Catalog Number: 500171

General Information

Gene Name Synonym:

Protein Construction:

A DNA sequence encoding the human PHOSPHO1 isoform 1 (Q8TCT1-1) (Met 1-Cys 267) was expressed, with a polyhistidine tag at the N-terminus.

Source: Human

Expression Host: E. coli

QC Testing

Activity:

Purity:

> 92 % as determined by SDS-PAGE

Endotoxin:

Please contact us for more information.

Stability:

Samples are stable for up to twelve months from date of receipt at -70°C

Predicted N terminal:

Met 1

Molecular Mass:

The recombinant human PHOSPHO1 consisting of 282 amino acids and has a calculated molecular

mass of 31.5 kDa. It migrates as an approximately 32 kDa band in SDS-PAGE under reducing conditions.

Formulation:

Lyophilized from sterile PBS, 10% glycerol, pH 7.5
1. 5 % trehalose and mannitol are added as protectants before lyophilization.

2. Please contact us for any concerns or special requirements.

Usage Guide

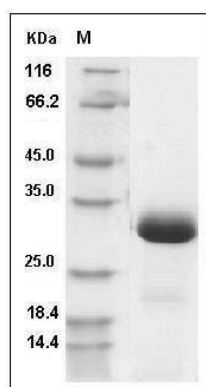
Storage:

Store it under sterile conditions at -20°C to -80°C. It is recommended that the protein be aliquoted for optimal storage. Avoid repeated freeze-thaw cycles.

Reconstitution:

Adding sterile water, prepare a stock solution of 0.25 mg/ml. Concentration is measured by UV-Vis.

SDS-PAGE:



Human PHOSPHO1 Protein (His Tag) SDS-PAGE