

General Information

Gene Name Synonym

Astrocyte-derived trophic factor

Protein Construction

A DNA sequence encoding the mature form of human GDNF (P39905-2) (Arg 83-Ile 185) was expressed and purified, with additional two aa (Gly& Pro) at the N-terminus.

Organism

Human

Expression Host

Human Cells

QC Testing

Activity

1. Measured in a cell proliferation assay using SH-SY5Y human neuroblastoma cells. The ED₅₀ for this effect is typically 3-15 ng/mL in the presence of Recombinant Human GFR alpha-1/GDNF R alpha-1 His Chimera.
2. Measured by its ability to bind biotinylated Human GFRa1-His in functional ELISA.

Purity

> 97 % as determined by SDS-PAGE

Endotoxin

< 1.0 EU per µg of the protein as determined by the LAL method

Stability

Samples are stable for up to twelve months from date of receipt at -70°C

Predicted N terminal

Gly

Molecular Mass

The recombinant human GDNF consists of 105 amino acids and predicts a molecular mass of 15.1 KDa. It migrates as approximately 18 KDa band in SDS-PAGE under reducing conditions.

Formulation

Lyophilized from sterile PBS, pH 7.4

1. 5 % trehalose and mannitol are added as protectants before lyophilization.
2. Please contact us for any concerns or special requirements.

Usage Guide

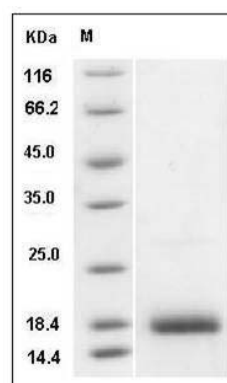
Storage

Store it under sterile conditions at -20°C to -80°C. It is recommended that the protein be aliquoted for optimal storage. Avoid repeated freeze-thaw cycles.

Reconstitution

Adding sterile water, prepare a stock solution of 0.25 mg/ml. Concentration is measured by UV-Vis.

SDS-PAGE



Human GDNF Protein SDS-PAGE